



OBEY

Fall 2023



The OBEY campaign can be explained as an experiment in phenomenology. The first aim of phenomenology is to reawaken a sense of wonder about one's environment. The OBEY campaign attempts to stimulate curiosity and bring people to question both the campaign and their relationship with their surroundings. Because people are not used to seeing advertisements or propaganda for which the motive is not obvious, frequent and novel encounters with OBEY propaganda provoke thought and possible frustration, nevertheless revitalizing the viewer's perception and attention to detail. To catalyze a thoughtful dialogue deconstructing the process of image absorption is the ultimate goal. All in the name of fun and observation.

The medium is the message.

HISTORY

1989

OG sticker – What started as a joke, became an obsession. First showing up in Providence, Rhode Island, the image quickly spread down the east coast and beyond. To date, over ten million stickers have been proliferated worldwide.

1990

OBEY Campaign - Inspired by John Carpenter's cult classic film *They Live*, the slogan OBEY was adopted to accompany the image. "It was totally campy, but I really liked the subversive elements of it, how people are slaves to consumerism because everything is glossy on the surface."

1995

OBEY Icon Face - Shepard stylizes the icon face evolving away from the OG sticker. Influenced by George Orwell's "Big Brother" image, the streamlined graphic approach of the Russian Constructivist poster, and Barbara Kruger's use of font and color, a new phase of the story emerges.

1995

Subliminal Projects – A multi-functional project space and gallery established by Shepard, skateboarder Blaize Blouin, and designer and DJ Alfred Hawkins as a way to introduce skateboard culture and design to the art world. Established on the east coast but eventually settling in LA, Subliminal Projects remains a space that champions emerging artists.

1996

East to West – Shepard Fairey closes screen printing shop in Providence, Rhode Island, and moves to San Diego, California to pursue graphic design and art.

1998

Burgeoning gallery career - Shepard's work begins to receive recognition on larger scale. Street art begins to build relevance amongst fans and collectors, opening up avenues in fine art galleries and other outlets.

2000

OBEY Clothing - Making OBEY T-shirts throughout his career, Shepard partners to expand the reach of his images on clothing. As a populist in nature, the idea to spread his message further through a new medium is launched.

2003

Studio Number One is founded by Shepard and Amanda Fairey – Deeply embedded with Fairey's DNA, Studio Number One design studio challenges how people think about their surroundings through bold marketing and advertising

HISTORY

2004

Swindle Magazine - Partnering with Roger Gastman, the magazine featured pop culture and lifestyle content around music, fashion, and the arts. Covers included the likes of Henry Rollins, Banksy, Twist, and more.

2006

Supply & Demand: The Art of Shepard Fairey is published, a retrospective look at Shepard's career to that point. In its third printing, the book covers his work to date in addition to essays and commentary from Fairey's contemporaries and those around in the early years.

2007

OBEY Awareness - OBEY Clothing launches the Awareness Campaign supporting non-profits through the production of T-shirts and donation of funds to organizations that fit the ideals and messaging of the brand.

2008

HOPE Poster – Motivated by his own civic responsibility, Shepard uses his skills to create a poster illustration of then-presidential candidate Barack Obama with the word HOPE underneath. The image becomes the predominately recognized image of the campaign, eventually being inducted into the National Portrait Gallery in Washington.

2010

Mayday – The final gallery show at Deitch Projects in Lower Manhattan, Mayday was an exhibition of primarily portraits of revolutionaries in the way of artists, musicians, and political activists.

2010

Exit Through The Giftshop – Shepard is heavily featured in the documentary by his friend, renowned street artist, Banksy. The film anchors street art in the culture of the day.

2015

OBEY Clothing Ideals – wanting to improve its oversight in sourcing and manufacturing, OBEY Clothing starts working with Fair Trade in addition to resourcing more organic, recycled and sustainable product through materials and transport. As an ongoing mission to improve, Ideals is an open-ended project that evolves as new opportunities become available. (2021 GOTS certification).

2017

We The People, Women's March – In collaboration with Amplifier, Shepard creates iconic protest art with messages including "Defend Dignity," "Greater Than Fear," and "Protect Each Other" celebrating and lifting up marginalized people.

HISTORY

2017

OBEY Giant Documentary - Hulu releases a documentary film, OBEY Giant: The Art and Dissent of Shepard Fairey on the life and career of Shepard, spanning the nearly 30 years of his career.

2017

DAMAGED - In conjunction with Library Street Collective, the DAMAGED exhibition launches in LA. The show focuses primarily on critical issues in society. As Shepard states, "DAMAGED is an honest diagnosis, but diagnosis is the first step to recognizing and solving problems."

2019

Facing The Giant – 3 Decades of Dissent celebrates 30 Years of OBEY. The show highlights a number of distinct works from each of the 3 decades of Shepard's OBEY art campaign repurposed or offered in a new format.

2019

100th Mural – Shepard completes his 100th mural in Providence, Rhode Island. Creativity, Equality, Justice is completed with support and inspiration from non-profit artist space AS220.



This icon indicates that this garment is unisex.



This icon indicates that this garment is constructed sustainably. More than just sustainable raw materials, we consider the social environment, and economic impact of its production.



This icon indicates that this garment is constructed with organic cotton. Certified organic cotton following strict regulations without the use of GMO's harmful pesticides, or synthetic fertilizers.



Fair Trade USA's Fair Trade Certified™ label empowers you, the consumer, with the knowledge that your purchase has a positive impact on the people who sew and grow the products you love.

For every OBEY Fair Trade Certified™ product sold, a percentage is paid directly to a special fund for the workers that create our goods. They decide collectively how to spend these funds based on their communities greatest needs: from scholarships, school buses, to medical care, disaster and relief services.



This icon indicates that this garment is constructed with recycled materials. Per t-shirt, 1.6 recycled plastic bottles and .10lbs of recycled cotton are used.

Reduce, Reuse, Recycle!



This icon indicates that this garment is GOTS certified. This product is sustainably sourced from seed to finished product, through environmentally and socially responsible manufacturing, and is certified by Global Organic Textile Standard.

TABLE OF CONTENTS

FALL 2023

8 SHEPARD FAIREY COLLECTION	15 ICON COLLECTION	19 MATCHING SETS	24 DENIM COLLECTION
29 UNISEX DENIM COLLECTION	33 JACKETS	37 PREMIUM FLEECE OUTERWEAR	40 SWEATERS
43 FLEECE	46 TOPS	49 BOTTOMS	54 UNISEX
72 HEADWEAR	75 SOCKS / BAGS	80 ACCESSOIRES	86 UNISEX CORE PRINTABLES
91 PRINTABLES			



SHEPARD FAIREY COLLECTION

SHEPARD FAIREY

ARTIST - ACTIVIST

Shepard Fairey, founder of OBEY and OBEY Clothing, was born in Charleston, South Carolina. He received his Bachelor of Fine Arts in Illustration at the Rhode Island School of Design in Providence, Rhode Island. In 1989 he created the "Andre the Giant has a Posse" sticker that transformed into the OBEY GIANT art campaign, with imagery that has changed the way people see art and the urban landscape. After 29 years, his work has evolved into an acclaimed body of art, which includes the 2008 "Hope" portrait of Barack Obama, found at the Smithsonian's National Portrait Gallery. The artist collaborated with Amplifier in 2017 to create the We The People series recognizable during the Women's Marches and other rallies around the world in defense of national and global social justice issues.

Fairey's stickers, guerilla street art presence, and 85 plus public murals are recognizable worldwide. His works are in the permanent collections of the Museum of Modern Art (MoMA), the Victoria and Albert Museum, the Smithsonian's National Portrait Gallery, the Boston Institute of Contemporary Art, the San Francisco Museum of Modern Art, and many others.

Fairey's distinct and recognizable style is unique to him and to OBEY. His lifestyle is the catalyst for all the brand does and the center point of influence and inspiration. This section isolates his work, from his classic graphic style to fine art renderings on garments. Each season, Shepard tackles new ideas and adds his special touch that makes OBEY what it is.

We hope you enjoy.

OBEY BARBWIRE FLOWER

PLEASE NOTE UNISEX STYLES ARE SIZED IN MEN'S SIZING

163003591

DESCRIPTION: ORGANIC TEE

CONTENT: 100% ORGANIC COTTON

SAGO, FADED BLACK, DIGITAL LAVENDER

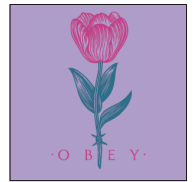
XS S M L XL XXL



SAGO



FADED BLACK



DIGITAL LAVENDER

D1 - SHEPARD FAIREY COLLECTION - ORGANIC TEE

OBEY BROKEN CLASS

PLEASE NOTE UNISEX STYLES ARE SIZED IN MEN'S SIZING

163003592

DESCRIPTION: ORGANIC TEE

CONTENT: 100% ORGANIC COTTON

DEEP LAGOON, FADED BLACK, SAGO

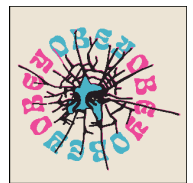
XS S M L XL XXL



DEEP LAGOON



FADED BLACK



SAGO

D1 - SHEPARD FAIREY COLLECTION - ORGANIC TEE

OBEY DOWNWARD SPIRAL

PLEASE NOTE UNISEX STYLES ARE SIZED IN MEN'S SIZING

163003597

DESCRIPTION: ORGANIC TEE

CONTENT: 100% ORGANIC COTTON

ADVENTURE GREEN, FADED BLACK, SAGO

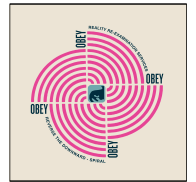
XS S M L XL XXL



ADVENTURE GREEN



FADED BLACK



SAGO

D1 - SHEPARD FAIREY COLLECTION - ORGANIC TEE

OBEY PYRAMID

PLEASE NOTE UNISEX STYLES ARE SIZED IN MEN'S SIZING

163003598

DESCRIPTION: ORGANIC TEE

CONTENT: 100% ORGANIC COTTON

FADE BLACK, SEPIA, SAGO

XS S M L XL XXL



FADED BLACK



SEPIA



SAGO

D1 - SHEPARD FAIREY COLLECTION - ORGANIC TEE

OBEY A NEW DAY RISING

163003594

DESCRIPTION: ORGANIC TEE

CONTENT: 100% ORGANIC COTTON

SAGO, FADED BLACK, CORK

XS S M L XL XXL



SAGO



FADED BLACK



CORK

D1 - SHEPARD FAIREY COLLECTION - ORGANIC TEE

PLEASE NOTE UNISEX STYLES ARE SIZED IN MEN'S SIZING

OBEY NEIGHBORHOOD WATCH

163003593

DESCRIPTION: ORGANIC TEE

CONTENT: 100% ORGANIC COTTON

ADVENTURE GREEN, FADED BLACK, SAGO

XS S M L XL XXL



ADVENTURE GREEN



FADED BLACK



SAGO

D1 - SHEPARD FAIREY COLLECTION - ORGANIC TEE

PLEASE NOTE UNISEX STYLES ARE SIZED IN MEN'S SIZING

OBEY BARBWIRE FLOWER

112843591

DESCRIPTION: PREMIUM FLEECE HOOD

CONTENT: 58% COTTON 42% POLYESTER

BLACK, SAGO

XS S M L XL XXL



PLEASE NOTE UNISEX STYLES ARE SIZED IN MEN'S SIZING



SAGO

BLACK

D1 - SHEPARD FAIREY COLLECTION - PREMIUM HOOD

OBEY NEIGHBORHOOD WATCH

112843593

DESCRIPTION: PREMIUM FLEECE HOOD

CONTENT: 58% COTTON 42% POLYESTER

SEPIA, BLACK

XS S M L XL XXL



PLEASE NOTE UNISEX STYLES ARE SIZED IN MEN'S SIZING



BLACK

SEPIA

D1 - SHEPARD FAIREY COLLECTION - PREMIUM HOOD

OBEY BARBWIRE FLOWER

100553591

DESCRIPTION: JUMBO TOTE BAG

CONTENT: 100% COTTON

NATURAL, BLACK

O/S



NATURAL



BLACK

SHEPARD FAIREY COLLECTION - ESSENTIALS

COVERT TO OVERT BOOK

326000035M

DESCRIPTION: COVERT TO OVERT SHOWCASES SHEPARD FAIREY'S EVOLUTION FROM WORKS ON PAPER TO GRANDER ART INSTALLATIONS, CROSS-CULTURAL WORKS, AND MUSIC/ART COLLABORATIONS

ASSORTED

O/S



ASSORTED

SHEPARD FAIREY COLLECTION - ESSENTIALS

ICON COLLECTION



FALL 2023 | HOLIDAY 2023

The OBEY Icon Collection represents the origins and iconography of OBEY from the past, to the present. This collection is embellished with the classic OBEY Icon Face that is a highly recognized image in streets and cities worldwide. This icon and its use in OBEY clothing represents and symbolizes the spirit of creativity, rebellion, and a question everything attitude. This collection of apparel is meant to celebrate our roots as a brand and a movement while also letting the OBEY Icon Face tear through the visual chaos of cities around the world.

The Medium is The Message

PLEASE NOTE UNISEX STYLES ARE SIZED IN MEN'S SIZING

ICON EXTRA HEAVY HOOD II

112470196

FIT: REGULAR FIT

DESCRIPTION: EXTRA HEAVY WEIGHT HOODED FLEECE WITH EMBROIDERY

70% COTTON 30% POLYESTER

BLACK, SILVER GREY, SEPIA, PASSION FLOWER

XS S M L XL XXL



BLACK



SILVER GREY



SEPIA



PASSION FLOWER

D1 - ICON COLLECTION

ICON EXTRA HEAVY CREW II

112480139

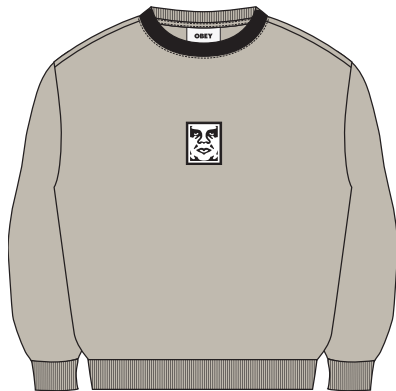
FIT: BOXY FIT

DESCRIPTION: EXTRA HEAVY WEIGHT CREW FLEECE WITH EMBROIDERY

70% COTTON 30% POLYESTER

SILVER GREY, BLACK, DARK CEDAR

XS S M L XL XXL



SILVER GREY



BLACK



DARK CEDAR

PLEASE NOTE UNISEX STYLES ARE SIZED IN MEN'S SIZING

D1 - ICON COLLECTION

ICON PATCH 6 PANEL STRAPBACK

100580303

FIT: CLASSIC FIT

DESCRIPTION: 6 PANEL STRAPBACK WITH OBEY ICON PATCH

100% COTTON

BLACK, ARMY, SILVER GREY

O/S



ARMY



SILVER GREY

BLACK

D1 - ICON COLLECTION

ICON PATCH CAMP HAT

100149101

FIT: CLASSIC FIT

DESCRIPTION: NYLON CAMP CAP WITH OBEY PATCH

100% NYLON

ARMY, BLACK, SILVER GREY

O/S



BLACK



SILVER GREY

ARMY

D1 - ICON COLLECTION

MID ICON PATCH CUFF BEANIE

100030195

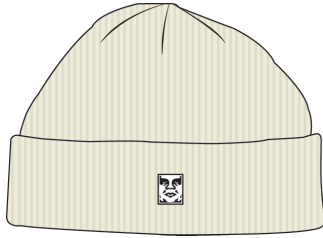
FIT: CLASSIC FIT

DESCRIPTION: MID BEANIE WITH OBEY PATCH

100% ACRYLIC

UNBLEACHED, BLACK, ARMY

O/S



UNBLEACHED



BLACK



ARMY

D1 - ICON COLLECTION

ICON PATCH CUFF BEANIE

100030198

FIT: CLASSIC FIT

DESCRIPTION: CUFF BEANIE WITH OBEY PATCH

100% ACRYLIC

PASSION FLOWER, BLACK, ARMY, UNBLEACHED

O/S



PASSION FLOWER



BLACK



ARMY



UNBLEACHED

D1 - ICON COLLECTION

MATHCING SETS



OBEY MAX FLANNEL SHIRT

281200122

FIT: RELAXED FIT

DESCRIPTION: CROPPED TWO POCKET PLAID FLANNEL SHIRT

100% COTTON

UNBLEACHED MULTI, CATECHU WOOD MULTI

XS S M L XL



CATECHU WOOD MULTI

UNBLEACHED MULTI

D1 - MATCHING SETS

OBEY MAX PLAID PANT

242020104

FIT: REGULAR FIT

DESCRIPTION: HIGH WAISTED PANT

100% COTTON

UNBLEACHED MULTI, CATECHU WOOD MULTI

24 25 26 27 28 29 30 31 32



CATECHU WOOD MULTI

UNBLEACHED MULTI

D1 - MATCHING SETS

OBEY NABI CORD SHIRT

281200123

FIT: RELAXED FIT

DESCRIPTION: CROPPED PRINTED CORDUROY SHIRT

100% COTTON

CATECHU WOOD MULTI, CLAY MULTI

XS S M L XL



CLAY MULTI

CATECHU WOOD MULTI

D1 - MATCHING SETS

NABI BAGGY CORD PANT

242020103

FIT: BAGGY FIT

DESCRIPTION: PLEATED BAGGY CORD PANT WITH ALL OVER PRINT

100% COTTON

CATECHU WOOD MULTI, CLAY MULTI

24 25 26 27 28 29 30 31 32



CLAY MULTI

CATECHU WOOD MULTI

D1 - MATCHING SETS

OBEY KARINA PULLOVER

231030125

FIT: REGULAR FIT

DESCRIPTION: VELOUR QUARTER ZIP PULLOVER WITH EMBROIDERY

80% COTTON 20% POLYESTER

SILVER GREY

XS S M L XL



SILVER GREY

D1 - MATCHING SETS

OBEY KARINA PANT

242000117

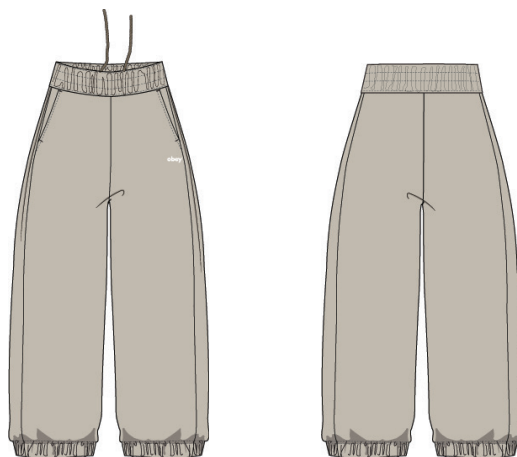
FIT: RELAXED FIT

DESCRIPTION: VELOUR BIG PANT WITH OBEY EMBROIDERY

80% COTTON 20% POLYESTER

SILVER GREY

XS S M L XL



SILVER GREY

D1 - MATCHING SETS

OBEY BRALETTE 2 PACK

231170030

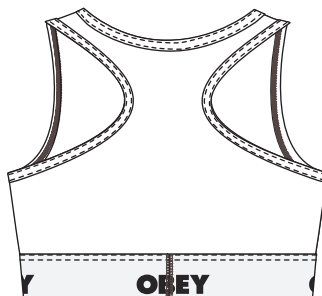
FIT: CROPPED FIT

DESCRIPTION: OBEY WIRELESS BRALETTE WITH LOGO ELASTIC BAND

95% COTTON 5% ELASTANE

WHITE, BLACK

XS S M L XL



BLACK

WHITE

D1 - TOPS

OBEY CHEEKY 2 PACK

200090000

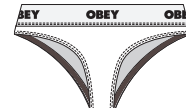
FIT: CROPPED FIT

DESCRIPTION: WOMEN'S CHEEKY UNDERWEAR

95% COTTON 5% ELASTANE

BLACK, WHITE

XS S M L XL



WHITE

BLACK

D1 - TOPS

DENIM COLLECTION



FALL 2023 | HOLIDAY 2023

The OBEY Denim Collection represents a diverse grouping of OBEY denim bottoms, jackets, and shirts in a variety of fits and shapes. We believe that OBEY denim and the diversity in our denim silhouettes is meant as a vehicle for your own personal style and mens self expression. The beauty of denim is how it wears and changes over time to create its own one of a kind characteristics just like you.

The Medium is The Message.

OBEY SALINA BOMBER

221800405

FIT: REGULAR FIT

DESCRIPTION: CROPPED ZIP UP HOODED BOMBER

100% COTTON

JAVA BROWN, LIGHT INDIGO

XS S M L XL



LIGHT INDIGO

JAVA BROWN

D1 - DENIM COLLECTION

OBEY ARIANA JACKET

221800407

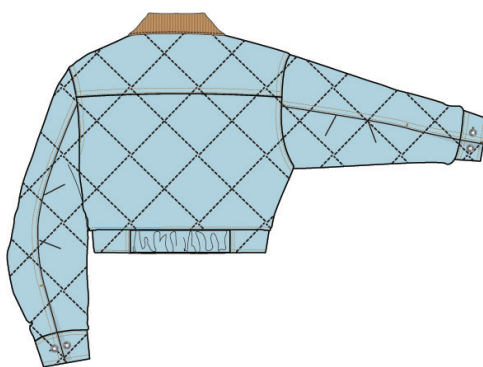
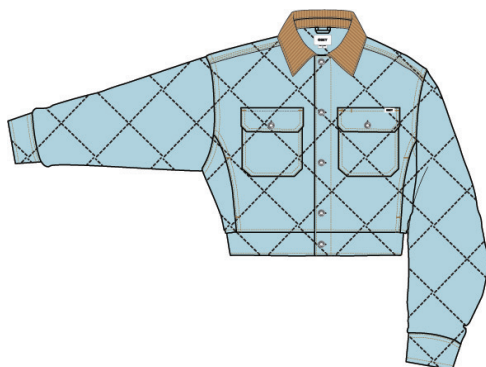
FIT: REGULAR FIT

DESCRIPTION: CROPPED DENIM JACKET WITH CONTRAST COLLAR

100% COTTON

LIGHT INDIGO, UNBLEACHED

XS S M L XL



UNBLEACHED

LIGHT INDIGO

D1 - DENIM COLLECTION

OBEY HAYDEN DRESS

401500413

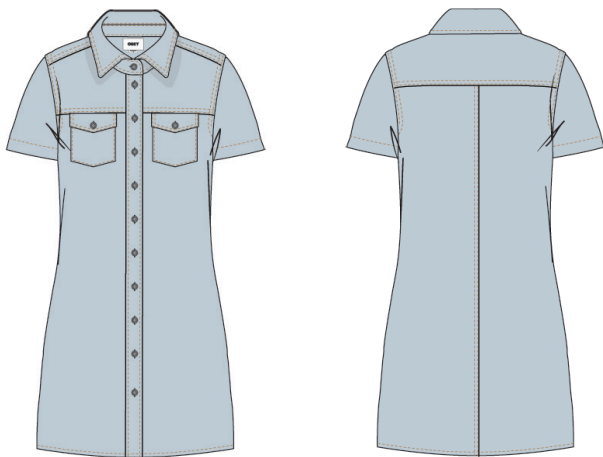
FIT: REGULAR FIT

DESCRIPTION: DENIM DRESS

100% COTTON

BLEACHED INDIGO, FADED BLACK

XS S M L XL



BLEACHED INDIGO



FADED BLACK

D1 - DENIM COLLECTION

OBEY KALLIE DENIM SKIRT

411550108

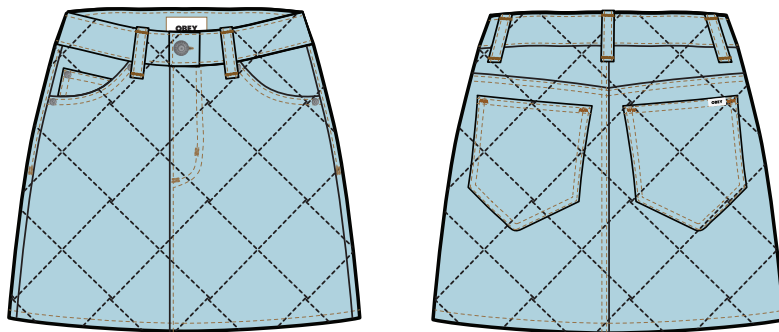
FIT: REGULAR FIT

DESCRIPTION: DENIM MINI SKIRT WITH DIAMOND BOX STITCHES

100% COTTON

LIGHT INDIGO, JAVA BROWN

24 25 26 27 28 29 30 31 32



LIGHT INDIGO



JAVA BROWN

D1 - DENIM COLLECTION

DENIM EASY DIAMOND PANT

242000116

FIT: RELAXED FIT

DESCRIPTION: ELASTIC WAIST PATCH POCKET DENIM PANT

100% COTTON

UNBLEACHED MULTI, LIGHT INDIGO MULTI

XS S M L XL



LIGHT INDIGO MULTI

UNBLEACHED MULTI

D1 - DENIM COLLECTION

SEARCH CARGO DENIM

242010050

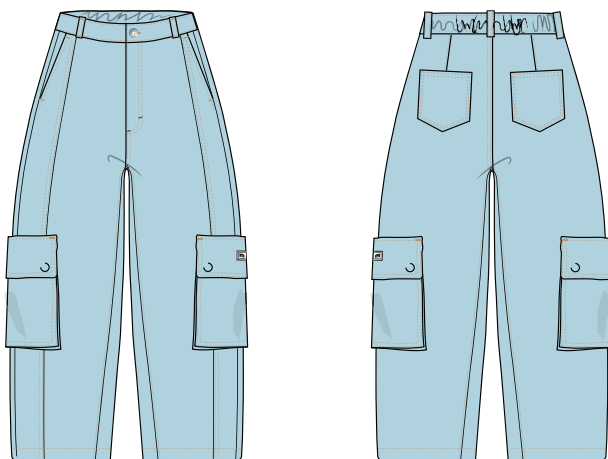
FIT: RELAXED FIT

DESCRIPTION: BAGGY DENIM CARGO

100% COTTON

LIGHT INDIGO, JAVA BROWN

24 25 26 27 28 29 30 31 32



JAVA BROWN

LIGHT INDIGO

D1 - DENIM COLLECTION

LEAH II BAGGY DENIM

242010049

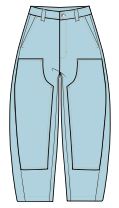
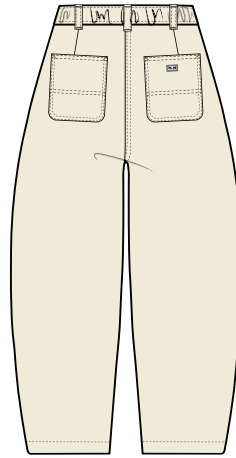
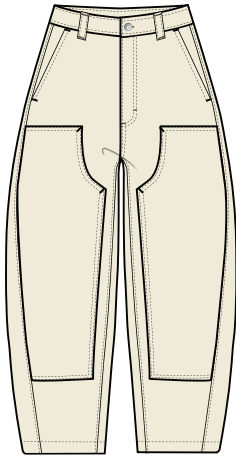
FIT: RELAXED FIT

DESCRIPTION: BAGGY DOUBLE KNEE DENIM

100% COTTON

UNBLEACHED, LIGHT INDIGO

24 25 26 27 28 29 30 31 32



LIGHT INDIGO

UNBLEACHED

D1 - DENIM COLLECTION



UNISEX DENIM COLLECTION

BENDER DENIM

142010080

FIT: STANDARD FIT

DESCRIPTION: STANDARD FIT 5 POCKET DENIM

100% COTTON

FADED BLACK, STONEWASH INDIGO, LIGHT INDIGO

26 27 28 29 30 31 32 33 34 36 38

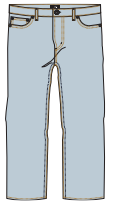
PLEASE NOTE UNISEX STYLES ARE SIZED IN MEN'S SIZING



FADED BLACK



STONEWASH INDIGO



LIGHT INDIGO

D1 - DENIM COLLECTION

HARDWORK DENIM

142010077

FIT: RELAXED FIT

DESCRIPTION: RELAXED FIT BUTTON FLY DENIM WITH EYES LABELING

100% COTTON

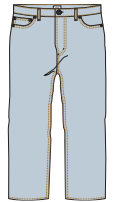
STONEWASH INDIGO, LIGHT INDIGO, FADED BLACK

26 27 28 29 30 31 32 33 34 36 38

PLEASE NOTE UNISEX STYLES ARE SIZED IN MEN'S SIZING



STONEWASH INDIGO



LIGHT INDIGO



FADED BLACK

D1 - DENIM COLLECTION

HARDWORK CARPENTER DENIM

PLEASE NOTE UNISEX STYLES ARE SIZED IN MEN'S SIZING

142010078

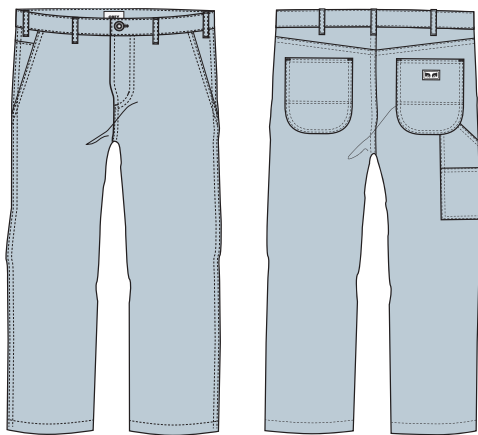
FIT: RELAXED FIT

DESCRIPTION: DENIM CARPENTER PANT

100% COTTON

LIGHT INDIGO, STONEWASH INDIGO

26 27 28 29 30 31 32 33 34 36 38



STONEWASH INDIGO

LIGHT INDIGO

D1 - DENIM COLLECTION

FUBAR PLEATED DENIM

PLEASE NOTE UNISEX STYLES ARE SIZED IN MEN'S SIZING

142010082

FIT: RELAXED FIT

DESCRIPTION: RELAXED FIT DENIM PANTS

100% COTTON

FADED BLACK, LIGHT INDIGO

26 27 28 29 30 31 32 33 34 36 38



LIGHT INDIGO

FADED BLACK

D1 - DENIM COLLECTION

EASY DENIM PANT

PLEASE NOTE UNISEX STYLES ARE SIZED IN MEN'S SIZING

142010079

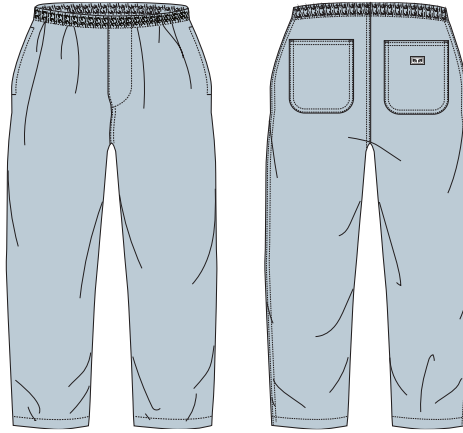
FIT: RELAXED FIT

DESCRIPTION: ELASTIC WAIST PATCH POCKET DENIM PANT

100% COTTON

LIGHT INDIGO, FADED BLACK

XS S M L XL XXL



LIGHT INDIGO



FADED BLACK

D1 - DENIM COLLECTION



JACKETS

OBEY DAYBREAK MA-1 BOMBER

221800408

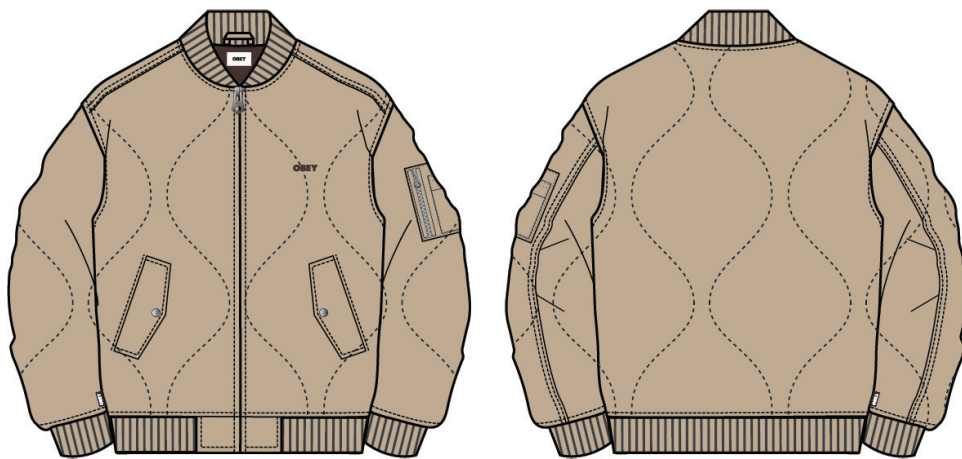
FIT: OVERSIZED FIT

DESCRIPTION: QUILTED MA-1 BOMBER WITH EMBROIDERY

100% POLYESTER

IRISH CREAM, JAVA BROWN

XS S M L XL



IRISH CREAM



JAVA BROWN

D1 - JACKETS

OBEY ELIXIR PUFFER

221800403

FIT: CROPPED FIT

DESCRIPTION: WOMEN'S CROPPED PUFFER

100% POLYESTER

JAVA BROWN MULTI, CLAY MULTI

XS S M L XL



JAVA BROWN MULTI



CLAY MULTI

D1 - JACKETS

OBEY MAZY VARSITY

221800404

FIT: REGULAR FIT

DESCRIPTION: SHERPA VARSITY JACKET WITH LOGO EMBROIDERY

100% POLYESTER

BLACK MULTI, CATECHU WOOD MULTI

XS S M L XL



CATECHU WOOD MULTI

BLACK MULTI

D1 - JACKETS

OBEY BRENDA JACKET

221800406

FIT: OVERSIZED FIT

DESCRIPTION: SHERPA ZIP UP SHIRT JACKET

100% POLYESTER

PURPLE ROSE, SEPIA

XS/S M/L



SEPIA

PURPLE ROSE

D1 - JACKETS

CHARLIE JACKET

121800546

FIT: REGULAR FIT

DESCRIPTION: QUILTED PUFFER WITH LOGO PRINT

100% NYLON

BLACK, SEPIA, SILVER GREY

XS S M L XL XXL

PLEASE NOTE UNISEX STYLES ARE SIZED IN MEN'S SIZING



BLACK



SEPIA



SILVER GREY

D1 - JACKETS

ROLL CALL VARSITY JACKET

121800552

FIT: REGULAR FIT

DESCRIPTION: WOOL VARSITY JACKET WITH OBEY APPLIQUE

52% POLYESTER 45% WOOL 2% VISCOSE 1% NYLON

SURF BLUE, BLACK

XS S M L XL XXL

PLEASE NOTE UNISEX STYLES ARE SIZED IN MEN'S SIZING

THIS STYLE IS ONLY AVAILABLE IN DELIVERY 2



SURF BLUE



BLACK

D2 - JACKETS



**PREMIUM
FLEECE
OUTERWEAR**

OBEY COLLEGIATE HOOD

211610132

FIT: OVERSIZE

DESCRIPTION: EMBROIDERED POLAR FLEECE HOOD

100% POLYESTER

UNBLEACHED, SURF BLUE

XS S M L XL



UNBLEACHED



SURF BLUE

D1 - PREMIUM FLEECE OUTERWEAR

OBEY WAVY POP OVER JACKET

221800412

FIT: REGULAR FIT

DESCRIPTION: SNAP FRONT MOCK NECK POP OVER JACKET

100% POLYESTER

CLEAR SKY MULTI, SEPIA MULTI

XS S M L XL



CLEAR SKY MULTI



SEPIA MULTI

D1 - PREMIUM FLEECE OUTERWEAR

OBEY WILLIE LINER JACKET

221800413

FIT: REGULAR FIT

DESCRIPTION: ALL OVER PRINTED LINER JACKET

100% POLYESTER

UNBLEACHED MULTI

XS S M L XL



UNBLEACHED MULTI

D1 - PREMIUM FLEECE OUTERWEAR

OBEY MELANIE JACKET

221800411

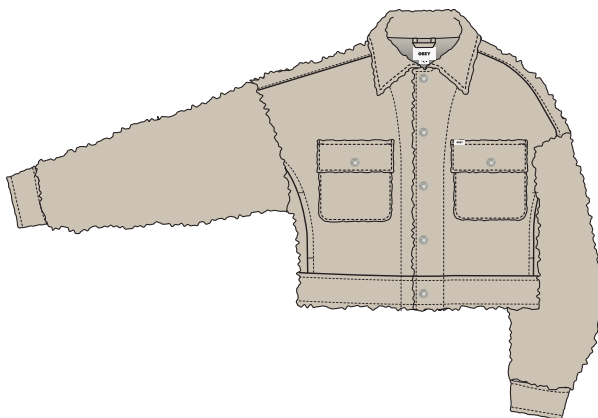
FIT: RELAXED FIT

DESCRIPTION: POLAR FLEECE TRUCKER JACKET

100% POLYESTER

SILVER GREY, PURPLE ROSE

XS S M L XL



SILVER GREY



PURPLE ROSE

D1 - PREMIUM FLEECE OUTERWEAR



SWEATERS

OBEY MIRA SWEATER VEST

251810007

FIT: REGULAR FIT

DESCRIPTION: BASKET WEAVE KNIT SWEATER VEST

80% ACRYLIC 20% WOOL

ACADEMY NAVY MULTI

XS S M L XL



ACADEMY NAVY MULTI

D1 - SWEATERS

OBEY CHARLIE SWEATER

251000116

FIT: RELAXED FIT

DESCRIPTION: STRIPE HOUNDSTOOTH POLO SWEATER

100% COTTON

BANANA CREAM MULTI

XS S M L XL



BANANA CREAM MULTI

OBEY FLORA SWEATER

251000114

FIT: RELAXED FIT

DESCRIPTION: CABLE KNIT SWEATER WITH OBEY EMBROIDERY

80% ACRYLIC 20% WOOL

PASSION FLOWER

XS S M L XL



PASSION FLOWER

D1 - SWEATERS



FLEECE

OBEY WILLOW BABY HOOD

211610135

FIT: BABY FIT

DESCRIPTION: EMBROIDERED BABY HOOD

58% COTTON 42% POLYESTER

BLACK, UNBLEACHED

XS S M L XL



BLACK



UNBLEACHED

D1 - FLEECE

OBEY STUDIOS HOOD

211610134

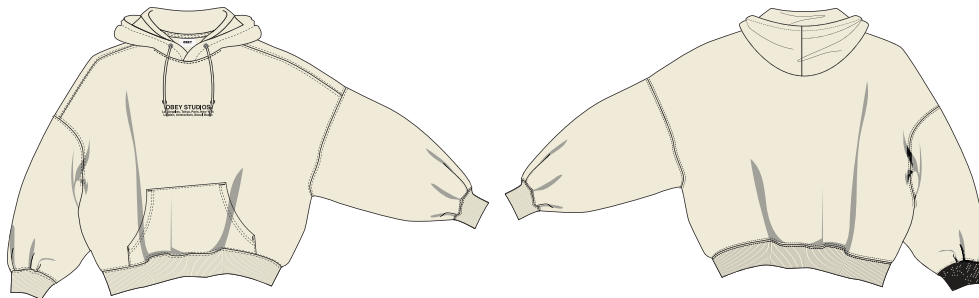
FIT: RELAXED FIT

DESCRIPTION: RELAXED FIT HOOD WITH EMBROIDERY

58% COTTON 42% POLYESTER

UNBLEACHED, SURF BLUE

XS S M L XL



UNBLEACHED



SURF BLUE

D1 - FLEECE

OBEY AMELIA CREW

211600153

FIT: CROPPED FIT

DESCRIPTION: CROPPED CREW WITH EMBROIDERY

58% COTTON 42% POLYESTER

AVENTURINE GREEN, UNBLEACHED

XS S M L XL



AVENTURINE GREEN



UNBLEACHED

D1 - FLEECE



TOPS

OBEY ROMELIA TEE LS

231030122

FIT: REGULAR FIT

DESCRIPTION: EMBROIDERED LONG SLEEVE STRIPE TEE

100% COTTON

BLACK MULTI

XS S M L XL



BLACK MULTI

D1 - TOPS

OBEY BELLE TURTLE NECK

231030124

FIT: REGULAR FIT

DESCRIPTION: RIBBED MOCK SWEATER

100% COTTON

SURF BLUE, BLACK

XS S M L XL



SURF BLUE

D1 - TOPS

OBEY SWINTON POLO

231040010

FIT: REGULAR FIT

DESCRIPTION: VELOUR POLO WITH A LOGO EMBROIDERY

80% COTTON 20% POLYESTER

DARK CEDAR MULTI, JAVA BROWN MULTI

XS S M L XL



JAVA BROWN MULTI

DARK CEDAR MULTI

D1 - TOPS

OBEY AGNES WAFFLE SHIRT

281200125

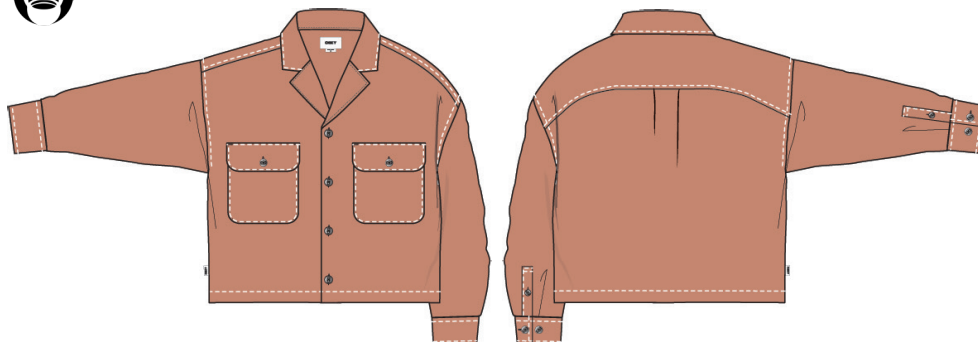
FIT: RELAXED FIT

DESCRIPTION: BOXY WAFFLE SHIRT WITH CONTRAST PICK STITCHES

100% COTTON

CORK, ACADEMY NAVY

XS S M L XL



ACADEMY NAVY

CORK

D1 - TOPS

BOTTOMS



DAILY PANT

242020105

FIT: REGULAR FIT

DESCRIPTION: TWILL PANT

60% COTTON 39% POLYESTER 1% SPANDEX

BLACK

24 25 26 27 28 29 30 31 32



BLACK

D1- BOTTOMS

BRIGHTON CARPENTER PANT

242020087

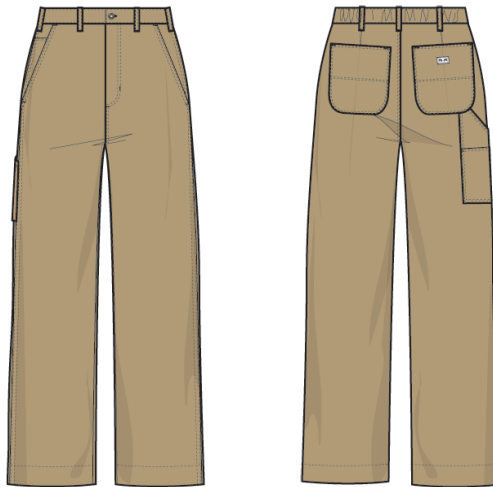
FIT: REGULAR FIT

DESCRIPTION: PAINTERS PANT

100% COTTON

LIGHT KHAKI, SEPIA, SILVER PINE

24 25 26 27 28 29 30 31 32



LIGHT KHAKI



SEPIA



SILVER PINE

D1- BOTTOMS

BRIGHTON PRINTED CARPENTER PANT

242020091

FIT: REGULAR FIT

DESCRIPTION: PAINTERS PANT

100% COTTON

CLAY MULTI, JAVA BROWN MULTI

24 25 26 27 28 29 30 31 32



JAVA BROWN MULTI

CLAY MULTI

D1- BOTTOMS

MILA WORK PANT

242020093

FIT: WIDE FIT

DESCRIPTION: TWILL WORK PANTS

100% COTTON

DARK CEDAR, SEPIA, SURF BLUE

24 25 26 27 28 29 30 31 32



SEPIA



SURF BLUE

DARK CEDAR

D1- BOTTOMS

MINA PARACHUTE PANT

242020102

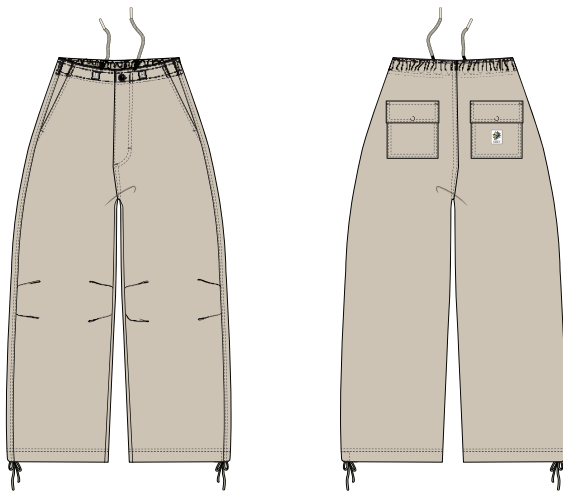
FIT: BAGGY FIT

DESCRIPTION: WOMENS LIGHT WEIGHT BAGGY PARACHUTE PANT

100% COTTON

SILVER GREY, JAVA BROWN

24 25 26 27 28 29 30 31 32



JAVA BROWN

SILVER GREY

D1- BOTTOMS

DONNA BIG CORD PANT

242020101

FIT: RELAXED FIT

DESCRIPTION: BAGGY CORDUROY PANTS WITH EMBROIDERY

100% COTTON

PURPLE ROSE, UNBLEACHED

24 25 26 27 28 29 30 31 32



UNBLEACHED

PURPLE ROSE

D1- BOTTOMS

ANDREA BAGGY CARGO PANT

242020100

FIT: RELAXED FIT

DESCRIPTION: BIG CORDUROY CARGO PANT

100% COTTON

JAVA BROWN, CLAY

24 25 26 27 28 29 30 31 32



JAVA BROWN

D1- BOTTOMS

OBEY GRETA SKIRT

411550109

FIT: REGULAR FIT

DESCRIPTION: ZIP CLOSURE CORDUROY MINI SKIRT

100% COTTON

RED ORANGE, SILVER GREY

24 25 26 27 28 29 30 31 32



RED ORANGE

D1- BOTTOMS



THREE RIVERS
BUILDING

UNISEX BOTTOMS

STRAGGLER FLOODED PANT

PLEASE NOTE UNISEX STYLES ARE SIZED IN MEN'S SIZING

142020113

FIT: STANDARD FIT

DESCRIPTION: FLOODED PANT

60% COTTON 39% POLYESTER 1% SPANDEX

BLACK, SEPIA BROWN, LEAF

26 27 28 29 30 31 32 33 34 36 38



BLACK



SEPIA BROWN



LEAF

D1 - BOTTOMS

STRAGGLER PANT

PLEASE NOTE UNISEX STYLES ARE SIZED IN MEN'S SIZING

142020150

FIT: STANDARD FIT

DESCRIPTION: STRAIGHT LEG PANT

60% COTTON 39% POLYESTER 1% SPANDEX

SEPIA BROWN, BLACK, LEAF

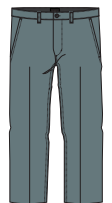
26 27 28 29 30 31 32 33 34 36 38



SEPIA BROWN



BLACK



LEAF

D1 - BOTTOMS

HUGHES TWILL PANT

PLEASE NOTE UNISEX STYLES ARE SIZED IN MEN'S SIZING

142020198

FIT: REGULAR FIT

DESCRIPTION: CASUAL TWILL PANT

100% COTTON

DULL BLUE, BLACK, FIELD GREEN

26 27 28 29 30 31 32 33 34 36 38



DULL BLUE



BLACK



FIELD GREEN

D1 - BOTTOMS

HARDWORK CARPENTER PANT

PLEASE NOTE UNISEX STYLES ARE SIZED IN MEN'S SIZING

142020184

FIT: REGULAR FIT

DESCRIPTION: CARPENTER PANT

100% COTTON

DARK BROWN, BLACK, WHITE

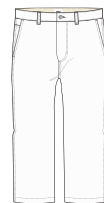
26 27 28 29 30 31 32 33 34 36 38



DARK BROWN



BLACK



WHITE

D1 - BOTTOMS

PLEASE NOTE UNISEX STYLES ARE SIZED IN MEN'S SIZING

ESTATE PANT

142020183

FIT: RELAXED FIT

DESCRIPTION: HEAVYWEIGHT TWILL PANT WITH SINGLE PLEAT FRONT

100% COTTON

SILVER PINE, BLACK, DARK BROWN, IRISH CREAM

26 27 28 29 30 31 32 33 34 36 38



SILVER PINE



BLACK



DARK BROWN



IRISH CREAM

D1 - BOTTOMS

ESTATE EMBROIDERED PANT

142020210

FIT: RELAXED FIT

DESCRIPTION: HEAVYWEIGHT TWILL PANT WITH SINGLE PLEAT FRONT

100% COTTON

BLACK, DARK BROWN, SILVER PINE

26 27 28 29 30 31 32 33 34 36 38



BLACK



DARK BROWN



SILVER PINE

PLEASE NOTE UNISEX STYLES ARE SIZED IN MEN'S SIZING

D1 - BOTTOMS

FUBAR PLEATED PANT

PLEASE NOTE UNISEX STYLES ARE SIZED IN MEN'S SIZING

142020201

FIT: RELAXED FIT

DESCRIPTION: RELAXED FIT PLEATED PANTS

60% POLY 40% RAYON

BLACK, ROSIN, SEPIA

26 27 28 29 30 31 32 33 34 36 38



BLACK



ROSIN



SEPIA

D1 - BOTTOMS



**BIG TIMER
BOTTOMS**

BIG TIMER TWILL DOUBLE KNEE CARPENTER PANT

PLEASE NOTE UNISEX STYLES ARE SIZED IN MEN'S SIZING

142020211

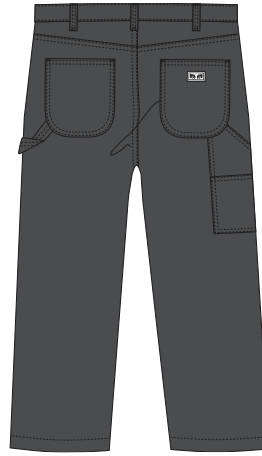
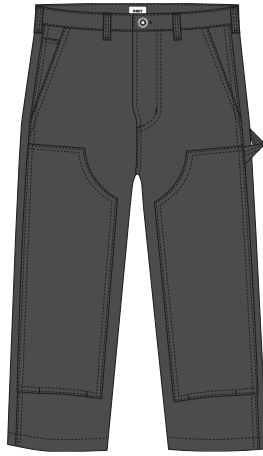
FIT: RELAXED FIT

DESCRIPTION: DOUBLE KNEE WORK PANTS WITH PATCH POCKETS

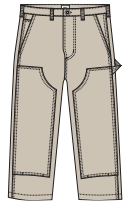
100% COTTON

BLACK, JAVA BROWN, CLAY

26 27 28 29 30 31 32 33 34 36 38



JAVA BROWN



CLAY

BLACK

D1 - BOTTOMS

BIG TIMER TWILL PRINTED CARPENTER PANT

PLEASE NOTE UNISEX STYLES ARE SIZED IN MEN'S SIZING

142020219

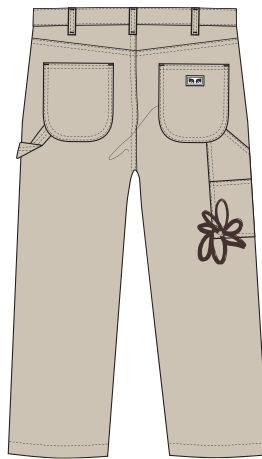
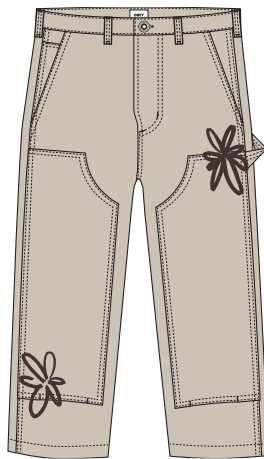
FIT: RELAXED FIT

DESCRIPTION: DOUBLE KNEE WORK PANTS WITH

100% COTTON

CLAY, DIGITAL BLACK

26 27 28 29 30 31 32 33 34 36 38



DIGITAL BLACK

CLAY

D1 - BOTTOMS



DAVID JORDAN SET THE MOOD

DEBUT ALBUM
RELEASED 5th NOVEMBER

www.setthemood.com

EMI

EASY ELASTIC BOTTOMS

CLEARCHANNEL

SATELLITE 51

BRAND NEW

FRANK DVOID (Surreal)
 A SEY (Acoustic)
 PAUL JORDAN (Surreal)
 TRON (Acoustic)
 PAULO JARDIM
 (Acoustic - Brazil)

TANIA VON PEAR
 ILANA FELSKY
 RICK MALIA

SEE THESE AND SUPPORT
 THEM TO THE MAXIMUM

www.sateelite51.com

© 2004

EASY TWILL PANT

142020142

FIT: RELAXED FIT

DESCRIPTION: ELASTIC WAIST TWILL PANT

100% COTTON

IRISH CREAM, BLACK, FIELD GREEN

XS S M L XL XXL



IRISH CREAM



BLACK



FIELD GREEN

PLEASE NOTE UNISEX STYLES ARE SIZED IN MEN'S SIZING

EASY CORD PANT

142020195

FIT: RELAXED FIT

DESCRIPTION: WIDE WALE ELASTIC CORDUROY PANT

100% COTTON

DIGITAL BLACK, DARK CEDAR, SEPIA, IRISH CREAM

XS S M L XL XXL



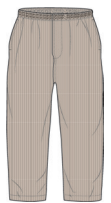
DIGITAL BLACK



DARK CEDAR



SEPIA



IRISH CREAM

PLEASE NOTE UNISEX STYLES ARE SIZED IN MEN'S SIZING

EASY RIPSTOP CARGO PANT

PLEASE NOTE UNISEX STYLES ARE SIZED IN MEN'S SIZING

142020196

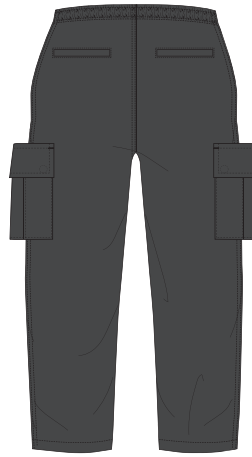
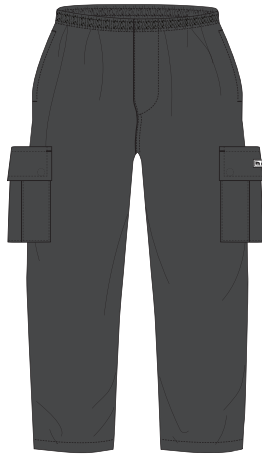
FIT: RELAXED FIT

DESCRIPTION: ELASTIC WAIST RIPSTOP CARGO PANT

100% COTTON

BLACK, FIELD GREEN, DARK BROWN

XS S M L XL XXL



FIELD GREEN



DARK BROWN

BLACK

D1 - BOTTOMS

BIG EASY CANVAS PANT

PLEASE NOTE UNISEX STYLES ARE SIZED IN MEN'S SIZING

142020203

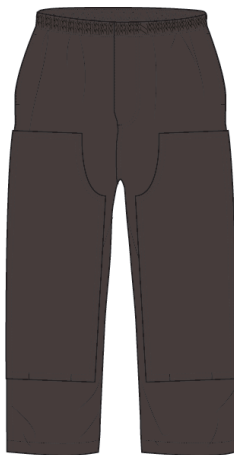
FIT: RELAXED FIT

DESCRIPTION: ELASTIC WAIST DOUBLE KNEE CANVAS PANT

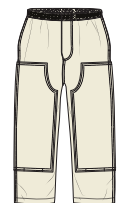
100% COTTON

DARK BROWN, SMOKEY OLIVE, UNBLEACHED

XS S M L XL XXL



SMOKEY OLIVE



UNBLEACHED

DARK BROWN

D1 - BOTTOMS

PIGMENT COLLECTION

FALL 2023 | HOLIDAY 2023

The OBEY Pigment Collection represents a grouping of high quality, premium fabrics, pigment garment dyed in classic stillouettes in seasonal colors. These colors have a dusty dyed effect that will change and evolve the more you wear and wash the the pieces, giving each piece unique one of a kind characteristics. These premium dyed garments are meant to be classic pieces, embellished with core OBEY branding and iconography to create long lasting, timeless garments that can be worn for comfort now and for years to come.

The Medium is The Message

PLEASE NOTE UNISEX STYLES ARE SIZED IN MEN'S SIZING

LOWERCASE PIGMENT HOOD

112470194

FIT: REGULAR FIT

DESCRIPTION: PIGMENT DYED EXTRA HEAVY WEIGHT HOODED FLEECE WITH EMBROIDERY

100% COTTON

PIGMENT DIGITAL BLACK, PIGMENT JAVA BROWN, PIGMENT PASSION FLOWER, PIGMENT CLAY

XS S M L XL XXL



PIGMENT DIGITAL BLACK



PIGMENT JAVA BROWN



PIGMENT PASSION FLOWER



PIGMENT CLAY

D1 - PIGMENT COLLECTION

LOWERCASE PIGMENT ZIP HOOD

112460019

FIT: REGULAR FIT

DESCRIPTION: PIGMENT DYED EXTRA HEAVY WEIGHT HOODED FLEECE WITH EMBROIDERY

100% COTTON

PIGMENT JAVA BROWN, PIGMENT DIGITAL BLACK, PIGMENT ACADEMY NAVY

XS S M L XL XXL



PIGMENT JAVA BROWN



PIGMENT DIGITAL BLACK



PIGMENT ACADEMY NAVY

PLEASE NOTE UNISEX STYLES ARE SIZED IN MEN'S SIZING

D1 - PIGMENT COLLECTION

LOWERCASE PIGMENT CREW

112480138

FIT: REGULAR FIT

DESCRIPTION: PIGMENT DYED EXTRA HEAVY WEIGHT CREW FLEECE WITH EMBROIDERY

100% COTTON

PIGMENT CLAY, PIGMENT ACADEMY NAVY, PIGMENT AVENTURINE GREEN

XS S M L XL XXL

PLEASE NOTE UNISEX STYLES ARE SIZED IN MEN'S SIZING



PIGMENT CLAY



PIGMENT ACADEMY NAVY



PIGMENT AVENTURINE GREEN

D1 - PIGMENT COLLECTION

LOWERCASE PIGMENT SWEATPANT

142030046

FIT: REGULAR FIT

DESCRIPTION: PIGMENT DYED EXTRA HEAVY WEIGHT SWEATPANT WITH EMBROIDERY

100% COTTON

PIGMENT DIGITAL BLACK, PIGMENT JAVA BROWN, PIGMENT CLAY

XS S M L XL XXL

PLEASE NOTE UNISEX STYLES ARE SIZED IN MEN'S SIZING



PIGMENT DIGITAL BLACK



PIGMENT JAVA BROWN



PIGMENT CLAY

D1 - PIGMENT COLLECTION

LOWERCASE PIGMENT POLO

PLEASE NOTE UNISEX STYLES ARE SIZED IN MEN'S SIZING

111620088

FIT: REGULAR FIT

DESCRIPTION: PIGMENT DYED EXTRA HEAVY WEIGHT POLO WITH EMBROIDERY

100% COTTON

PIGMENT AVENTURINE GREEN, PIGMENT DIGITAL BLACK, PIGMENT CLAY

XS S M L XL XXL



PIGMENT AVENTURINE GREEN



PIGMENT DIGITAL BLACK



PIGMENT CLAY

D1 - PIGMENT COLLECTION

LOWERCASE PIGMENT THERMAL LS

PLEASE NOTE UNISEX STYLES ARE SIZED IN MEN'S SIZING

131030128

FIT: REGULAR FIT

DESCRIPTION: LONG SLEEVE THERMAL WITH OBEY EMBROIDERY

100% COTTON

PIGMENT JAVA BROWN, PIGMENT AVENTURINE GREEN, PIGMENT CLAY

XS S M L XL XXL



PIGMENT JAVA BROWN



PIGMENT AVENTURINE GREEN



PIGMENT CLAY

D1 - PIGMENT COLLECTION

LOWERCASE PIGMENT TEE SS

131080353

FIT: REGULAR FIT

DESCRIPTION: EXTRA HEAVY WEIGHT HOODED FLEECE WITH EMBROIDERY

100% COTTON

PIGMENT PASSION FLOWER, PIGMENT DIGITAL BLACK, PIGMENT AVENTURINE GREEN, PIGMENT CLAY

XS S M L XL XXL



PIGMENT PASSION FLOWER



PIGMENT DIGITAL BLACK



PIGMENT AVENTURINE GREEN



PIGMENT CLAY

D1 - PIGMENT COLLECTION

BIGWIG COLLECTION

FALL 2023 | HOLIDAY 2023

The OBEY Bigwig Collection represents the freedom of BIG expression and BIG experimentation both in cut and sew as well as graphics and art. The energy of the Bigwig collection is a place where a person can experiment, create, play, and mix concepts and garment proportions and graphics that are more fringe and different from the norm. It's currently a home for giant pants and fringe tee graphics paired with more subtle cut and sew pieces that represent the sub cultures and styles we are inspired by.

The ideas are youthful in spirit and energy. They are often eye-catching, fringe or experimental in their expression, execution or proportions. This collection is inspired by decades of youth energy, creative cultures and the spirit of underground scenes both past and present. For OBEY the BIGWIG collection represents the roots we came from and the creative journey we are on. It is a place where we take this creative energy, blend it together and hopefully inspire others.

The Medium is The Message

PLEASE NOTE UNISEX STYLES ARE SIZED IN MEN'S SIZING

BIGWIG BAGGY DENIM

142010087

FIT: BAGGY FIT

DESCRIPTION: BAGGY FIT 5 POCKET DENIM

100% COTTON

JAVA BROWN, FADED BLACK, STONE WASH INDIGO, LIGHT INDIGO

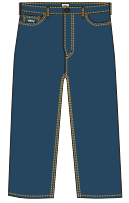
26 27 28 29 30 31 32 33 34 36 38



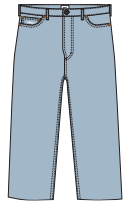
JAVA BROWN



FADED BLACK



STONE WASH INDIGO



LIGHT INDIGO

D1 - BIGWIG COLLECTION

PLEASE NOTE UNISEX STYLES ARE SIZED IN MEN'S SIZING

BIGWIG DENIM CARPENTER PANT

142010093

FIT: BAGGY FIT

DESCRIPTION: BAGGY FIT DENIM CARPENTER PANT

100% COTTON

LAUREL WREATH, DIGITAL BLACK, JAVA BROWN, LIGHT INDIGO

26 27 28 29 30 31 32 33 34 36 38



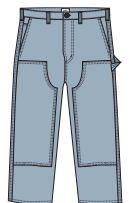
LAUREL WREATH



DIGITAL BLACK



JAVA BROWN



LIGHT INDIGO

D1 - BIGWIG COLLECTION

BIG WIG CARGO DENIM PANT

142010094

FIT: RELAXED FIT

DESCRIPTION: BIG FIT 5 CARGO DENIM PANT

100% COTTON

STONE WASH, LIGHT INDIGO, JAVA BROWN, CLAY

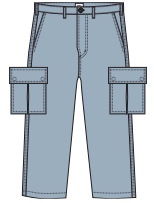
26 27 28 29 30 31 32 33 34 36 38



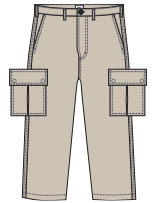
STONE WASH



JAVA BROWN



LIGHT INDIGO



CLAY

D1 - BIGWIG COLLECTION

A black and white photograph of a narrow hallway. On the left, there is a complex structure of metal scaffolding. On the right, the wall is covered in a grid of stylized, high-contrast faces, possibly a mural or a wall of posters. The lighting is dramatic, with a bright light source in the distance creating a strong glow and casting deep shadows. The word "HEADWEAR" is overlaid in the center in a bold, white, sans-serif font.

HEADWEAR

VIRGIL BEANIE

200030116

FIT: CLASSIC FIT

DESCRIPTION: CLASSIC BEANIE IN SOLID COLORS WITH OBEY LABEL

100% ACRYLIC

BLACK, JAVA BROWN, PURPLE ROSE, SILVER GREY

O/S



BLACK



JAVA BROWN



PURPLE ROSE



SILVER GREY

D1 - HEADWEAR

OBEY DIANA BEANIE

200030121

FIT: CLASSIC FIT

DESCRIPTION: JACQUARD BEANIE

100% ACRYLIC

UNBLEACHED MULTI, JAVA BROWN MULTI

O/S



UNBLEACHED MULTI



JAVA BROWN MULTI

D1 - HEADWEAR

OBEY STUDIOS STRAP BACK HAT

200140151

FIT: CLASSIC FIT

DESCRIPTION: STRAP BACK HAT WITH EMBROIDERY

100% COTTON

BLACK, SURF BLUE

O/S



BLACK



SURF BLUE

D1 - HEADWEAR

OBEY AMELIA STRAP BACK HAT

200140152

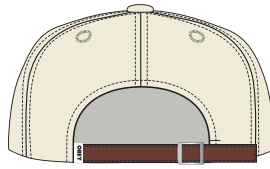
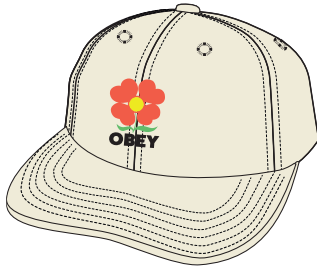
FIT: CLASSIC FIT

DESCRIPTION: STRAP BACK HAT WITH A EMBROIDERY

100% COTTON

UNBLEACHED, AVENTURINE GREEN

O/S



AVENTURINE GREEN

UNBLEACHED

D1 - HEADWEAR

OBEY ANNA STRAPBACK

100580350

FIT: CLASSIC FIT

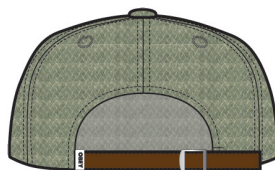
DESCRIPTION: STRAP BACK HAT WITH A EMBROIDERY

80% POLYESTER 20% WOOL

PASTEL GREEN, BROWN

O/S

PLEASE NOTE UNISEX STYLES ARE SIZED IN MEN'S SIZING



BROWN

PASTEL GREEN

D1 - HEADWEAR

OBEY INSULATED BUCKET HAT

100520085

FIT: CLASSIC FIT

DESCRIPTION: INSULATED BUCKET HAT

100% POLYESTER

BLACK, SILVER GREY

O/S

PLEASE NOTE UNISEX STYLES ARE SIZED IN MEN'S SIZING



SILVER GREY

BLACK

D1 - HEADWEAR



SOCKS

COOP SOCK

200260070

DESCRIPTION: SOCK WITH CUSTOM OBEY JACQUARD STRIPES AND LOGO

CONTENT: 85% COTTON 13% POLY 2% ELASTANE

WHITE / PASSION FLOWER, WHITE / BLACK, WHITE / CATECHU WOOD

O/S



WHITE / PASSION FLOWER



WHITE / BLACK



WHITE / CATECHU WOOD

D1 - SOCKS

OBEY AMELIA SOCKS

200260085

DESCRIPTION: OBEY EMBROIDERED SOCKS

CONTENT: 85% COTTON 13% POLY 2% ELASTANE

WHITE MULTI, SURF BLUE

O/S



WHITE MULTI



SURF BLUE

D1 - SOCKS



PEACE

LA CAFFE

San Hing St
香港街

TENNIS TRAINING
WALKERS

VISUAL DISOBEDIENCE

BAGS

WASTED HIP BAG

100010098

DESCRIPTION: SMALL HIP BAG

100% COTTON TWILL

DENIM, BLACK TWILL

O/S



DENIM



BLACK TWILL

D1 - BAGS

COMMUTER WAIST BAG

100010126

DESCRIPTION: TECHNICAL WAIST BAG WITH MULTIPLE POCKETS, COMPRESSION STRAPS, AND PVC PATCH

100% POLYESTER

SURF BLUE MULTI, BLACK

O/S



SURF BLUE MULTI



BLACK

D1 - BAGS

CONDITIONS TRAVELER BAG III

100010135

DESCRIPTION: SHOULDER BAG WITH MULTIPLE POCKETS AND PVC PATCH

100% POLYESTER

BROWN MULTI, BLACK

O/S



BROWN MULTI



BLACK

D1 - BAGS

FLOWER FIELD TOTE BAG

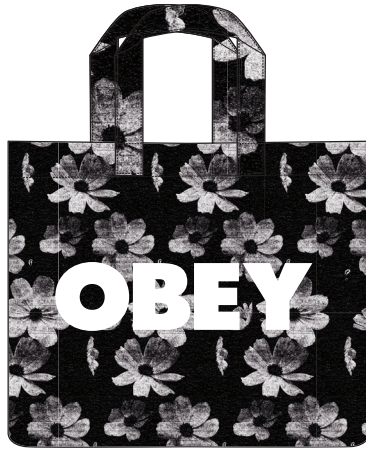
100010147

DESCRIPTION: PVC TOTA BAG WITH POPLIN UNDERLAY, INTERIOR POCKET AND SCREENPRINT

CONTENT: 100% PVC

BLACK MULTI

O/S



BLACK MULTI

D1 - TOTE BAG

ACCESSORIES



BIG BOY WEB BELT

100050026

DESCRIPTION: ADJUSTABLE WEB BELT WITH SILVER HARDWARE AND A OBEY EYE LABEL

60% COTTON / 40% POLYESTER

SURF BLUE, BLACK, JAVA BROWN, UNBLEACHED

O/S



BLACK



JAVA BROWN



UNBLEACHED

SURF BLUE

D1 - ACCESSORIES

OBEY GRAFFITI BELT

100050038

DESCRIPTION: PRINTED WEB BELT WITH BUCKLE AND EYES LABEL

60% COTTON 40% POLYESTER

BLACK MULTI, JAVA BROWN MULTI

O/S



JAVA BROWN MULTI

BLACK MULTI

D1 - ACCESSORIES

OBEY SNAKE DRESS BELT

100050036

DESCRIPTION: EMBOSSED FAUX SNAKE SKIN PRINT BELT WITH PU BACKING AND ENGRAVED METAL BUCKLE AND END TIP

50% POLYESTER 50% PU

TAN, DARK GREEN

S/M, L/XL

PLEASE NOTE UNISEX STYLES ARE SIZED IN MEN'S SIZING



DARK GREEN

TAN

D1 - ACCESSORIES

BULLDOG AIR FRESHNER

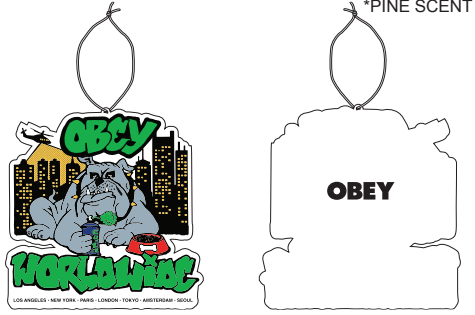
100680011

DESCRIPTION: PRINTED AIR FRESHENER WITH PINE SCENT

100% PAPER

BLACK MULTI

O/S



BLACK MULTI

D1 - ACCESSORIES

OBEY ICON BANDANA

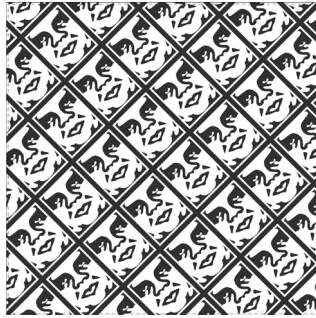
100020002

DESCRIPTION: PRINTED BANDANA

100% COTTON

BLACK / WHITE

O/S



BLACK / WHITE

D1 - ACCESSORIES

OBEY ICON AIR FRESHENER

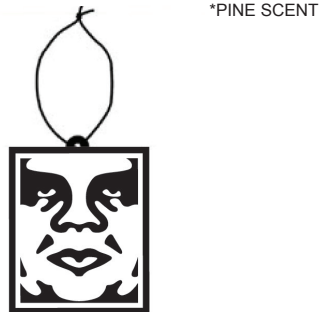
100680003

DESCRIPTION: PRINTED AIR FRESHENER WITH PINE SCENT

100% PAPER

BLACK MULTI

O/S



BLACK MULTI

D1 - ACCESSORIES

OBEY ICON METAL KEYCHAIN

100160021

DESCRIPTION: METAL KEYCHAIN WITH ICON

100% METAL

WHITE

O/S



WHITE

D1 - ACCESSORIES

BOLD BOTTLE

100320006

DESCRIPTION: METAL INSTALLED WATER BOTTLE WITH PRINT

100% METAL

WHITE

O/S



WHITE

D1 - ACCESSORIES

BOLD PEN

100770000

DESCRIPTION: PLASTIC BAL POINT PEN

100% METAL

BLACK

O/S



BLACK

D1 - ACCESSORIES

STICKER PACK 5

100270012

DESCRIPTION: ASSORTED STICKERS FOR THE OBEY FIENDS. SPREAD IT! (STICKERS MAY VARY FROM CATALOG PHOTO)

ASSORTED

O/S



ASSORTED

D1 - ACCESSORIES

STICKER PACK 2

100270001

DESCRIPTION: ASSORTED STICKERS FOR THE OBEY FIENDS. SPREAD IT! (STICKERS MAY VARY FROM CATALOG PHOTO)

ASSORTED

O/S



ASSORTED

D1 - ACCESSORIES

OBEY WORLDWIDE ICON

326003236

DESCRIPTION: CORK BLOCK WITH BOLD OBEY PRINT

100% CORK

O/S

* THIS ITEM IS POP, AND INTENDED TO BE USED IN STORE DISPLAY. NOT FOR RESALE



CORK

D1 - POP

OBEY LOWERCASE ICON

326003531

DESCRIPTION: CORK BLOCK WITH BOLD OBEY PRINT

100% CORK

O/S

* THIS ITEM IS POP, AND INTENDED TO BE USED IN STORE DISPLAY. NOT FOR RESALE



CORK

LARGE ICON FACE FRAMED PRINT

326000174

DESCRIPTION: FRAMED PRINT

ASSORTED

O/S

* THIS ITEM IS POP, AND INTENDED TO BE USED IN STORE DISPLAY. NOT FOR RESALE



ASSORTED

D1 - POP

CORE PRINTABLES



PLEASE NOTE UNISEX STYLES ARE SIZED IN MEN'S SIZING

OBEY BOLD HOOD

112842349

DESCRIPTION: PREMIUM HOOD

CONTENT: 58% COTTON 42% POLYESTER

SURF BLUE, BLACK, ACADEMY NAVY, SILVER GREY

XS S M L XL XXL



SURF BLUE



BLACK



ACADEMY NAVY



SILVER GREY

D1 - CORE PRINTABLES

PLEASE NOTE UNISEX STYLES ARE SIZED IN MEN'S SIZING

OBEY EYES ICON HOOD

112843126

DESCRIPTION: PREMIUM HOOD

CONTENT: 58% COTTON 42% POLYESTER

PASSION FLOWER, BLACK, SEPIA, UNBLEACHED

XS S M L XL XXL



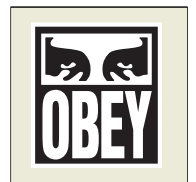
PASSION FLOWER



BLACK



SEPIA



UNBLEACHED

D1 - CORE PRINTABLES

OBEY BOLD CREW

112862349

DESCRIPTION: PREMIUM CREW

CONTENT: 58% COTTON 42% POLYESTER

ADVENTURE GREEN, BLACK, SURF BLUE

XS S M L XL XXL

PLEASE NOTE UNISEX STYLES ARE SIZED IN MEN'S SIZING



BLACK



SURF BLUE

ADVENTURE GREEN

D1 - CORE PRINTABLES

OBEY EYES ICON CREW

112863126

DESCRIPTION: PREMIUM CREW

CONTENT: 58% COTTON 42% POLYESTER

BLACK, SILVER GREY, HEATHER GREY

XS S M L XL XXL

PLEASE NOTE UNISEX STYLES ARE SIZED IN MEN'S SIZING



SILVER GREY



HEATHER GREY

BLACK

D1 - CORE PRINTABLES

OBEY EYES ICON ZIP

112853126

DESCRIPTION: PREMIUM ZIP HOOD FLEECE

CONTENT: 58% COTTON 42% POLYESTER

SURF BLUE, BLACK

XS S M L XL XXL

PLEASE NOTE UNISEX STYLES ARE SIZED IN MEN'S SIZING



BLACK

SURF BLUE

D1 - CORE PRINTABLES

OBEY BOLD ZIP

112852349

DESCRIPTION: PREMIUM ZIP HOOD FLEECE

CONTENT: 58% COTTON 42% POLYESTER

BLACK, HEATHER GREY

XS S M L XL XXL

PLEASE NOTE UNISEX STYLES ARE SIZED IN MEN'S SIZING



HEATHER GREY

BLACK

D1 - CORE PRINTABLES

OBEY EYES ICON 2

166912142

DESCRIPTION: HEAVYWEIGHT BOX FIT T-SHIRT

CONTENT: 100% COTTON

SILVER GREY, OFF BLACK, SEPIA, SURF BLUE, MULBERRY PURPLE

XS S M L XL XXL



SILVER GREY



OFF BLACK



SEPIA



SURF BLUE



MULBERRY PURPLE

D1 - CORE PRINTABLES

PRINTABLES



AL
ED

OBEY FLAMING GRAFFITI

263762410

DESCRIPTION: CROPPED RIB FITTED LONG SLEEVE TEE WITH A LETTUCE EDGE

CONTENT: 100% COTTON RIB

DIGITAL BLACK, SEPIA

XS S M L XL



DIGITAL BLACK



SEPIA

D1 - CROPPED JESS RIB FITTED LONG SLEEVE

OBEY CHERUBS ITS ALL LOVE 2

263762411

DESCRIPTION: CROPPED RIB FITTED LONG SLEEVE TEE WITH A LETTUCE EDGE

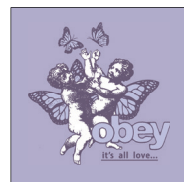
CONTENT: 100% COTTON RIB

SEPIA, DIGITAL LAVENDER

XS S M L XL



SEPIA



DIGITAL LAVENDER

D1 - CROPPED JESS RIB FITTED LONG SLEEVE

OBEY WATERCOLOR TEDDY BEARS

263762401

DESCRIPTION: CROPPED RIB FITTED LONG SLEEVE TEE WITH A LETTUCE EDGE

CONTENT: 100% COTTON RIB

DIGITAL LAVENDER, WHITECAP GRAY

XS S M L XL



DIGITAL LAVENDER



WHITECAP GRAY

D1 - CROPPED JESS RIB FITTED LONG SLEEVE

OBEY LOVE PUPPY

263762405

DESCRIPTION: CROPPED RIB FITTED LONG SLEEVE TEE WITH A LETTUCE EDGE

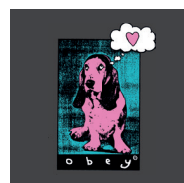
CONTENT: 100% COTTON RIB

ITALIAN CLAY, DIGITAL BLACK

XS S M L XL



ITALIAN CLAY



DIGITAL BLACK

D1 - CROPPED JESS RIB FITTED LONG SLEEVE

OBEY LOWER CASE

263732422

DESCRIPTION: FITTED RIB TANK

CONTENT: 100% COTTON RIB

FERN, SEPIA, CLAY

XS S M L XL



FERN



SEPIA



CLAY

D1 - RIB MEGAN TANK

HOUSE OF OBEY BUTTERFLY

263732407

DESCRIPTION: FITTED RIB TANK

CONTENT: 100% COTTON RIB

SEPIA, DIGITAL BLACK

XS S M L XL



SEPIA



DIGITAL BLACK

D1 - RIB MEGAN TANK

OBEY ANGEL HEART

263732408

DESCRIPTION: FITTED RIB TANK

CONTENT: 100% COTTON RIB

WHITE, FERN

XS S M L XL



WHITE



FERN

D1 - RIB MEGAN TANK

ICON EYES ANGEL

263732409

DESCRIPTION: FITTED RIB TANK

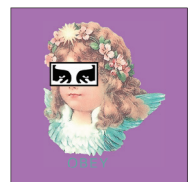
CONTENT: 100% COTTON RIB

ITALIAN CLAY, MULBERRY PURPLE

XS S M L XL



ITALIAN CLAY



MULBERRY PURPLE

D1 - RIB MEGAN TANK

OBEY WORLDWIDE BUTTERFLY

263742403

DESCRIPTION: CROPPED RIB FITTED TEE WITH A LETTUCE EDGE

CONTENT: 100% COTTON RIB

MULBERRY PURPLE, FERN

XS S M L XL



FERN

MULBERRY PURPLE

D1 - CROPPED EMMA FITTED TEE

OBEY SPRAY PAINTED FLOWER

263742404

DESCRIPTION: CROPPED RIB FITTED TEE WITH A LETTUCE EDGE

CONTENT: 100% COTTON RIB

SEPIA, FERN

XS S M L XL



FERN

SEPIA

D1 - CROPPED EMMA FITTED TEE

OBEY LOVE PUPPY

263742405

DESCRIPTION: CROPPED RIB FITTED TEE WITH A LETTUCE EDGE

CONTENT: 100% COTTON RIB

FERN, MULBERRY PURPLE

XS S M L XL



MULBERRY PURPLE

FERN

D1 - CROPPED EMMA FITTED TEE

OBEY DEVIL

263742406

DESCRIPTION: CROPPED RIB FITTED TEE WITH A LETTUCE EDGE

CONTENT: 100% COTTON RIB

WHITE, AZURE BLUE

XS S M L XL



AZURE BLUE

WHITE

D1 - CROPPED EMMA FITTED TEE

OBEY LOWER CASE 2

267782422

DESCRIPTION: RELAXED CROPPED TEE

CONTENT: 100% COTTON

SURF BLUE, DIGITAL LAVENDER, SULPHUR SPRING

XS S M L XL



SURF BLUE



DIGITAL LAVENDER



SULPHUR SPRING

D1 - WEEKEND CROP TEE

OBEY HEAVEN ANGEL

267782400

DESCRIPTION: RELAXED CROPPED TEE

CONTENT: 100% COTTON

SULPHUR SPRING, WHITE

XS S M L XL



SULPHUR SPRING



WHITE

D1 - WEEKEND CROP TEE

OBEY WATERCOLOR TEDDY BEARS

267782401

DESCRIPTION: RELAXED CROPPED TEE

CONTENT: 100% COTTON

SEPIA, DIGITAL BLACK

XS S M L XL



SEPIA



DIGITAL BLACK

D1 - WEEKEND CROP TEE

DRIFTING ON A DAYDREAM

267782402

DESCRIPTION: RELAXED CROPPED TEE

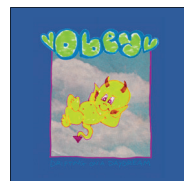
CONTENT: 100% COTTON

WHITE, SURF BLUE

XS S M L XL



WHITE



SURF BLUE

D1 - WEEKEND CROP TEE

OBEY EYES

267622712

DESCRIPTION: HEAVYWEIGHT BOX FIT CROP T-SHIRT

CONTENT: 100% COTTON

OFF BLACK, WHITE

XS S M L XL



OFF BLACK



WHITE

D1 - CUSTOM CROP TEE

OBEY STUDIOS

267622444

DESCRIPTION: HEAVYWEIGHT BOX FIT CROP T-SHIRT

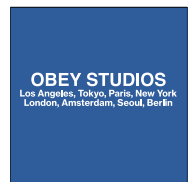
CONTENT: 100% COTTON

WHITE, SURF BLUE

XS S M L XL



WHITE



SURF BLUE

D1 - CUSTOM CROP TEE

OBEY GROWTH

267622445

DESCRIPTION: HEAVYWEIGHT BOX FIT CROP T-SHIRT

CONTENT: 100% COTTON

WHITE, DIGITAL LAVENDER

XS S M L XL



WHITE



DIGITAL LAVENDER

D1 - CUSTOM CROP TEE

OBEY CHERUBS IT'S ALL LOVE

263452392

DESCRIPTION: PIGMENT CHOICE BOX TEE

CONTENT: 100% COTTON

AZURE BLUE, WHITE

XS S M L XL



AZURE BLUE



WHITE

D1 - PIGMENT CHOICE BOX TEE

OBEY GREEN EYES

263452398

DESCRIPTION: PIGMENT CHOICE BOX TEE

CONTENT: 100% COTTON

CLAY, ITALIAN CLAY

XS S M L XL



CLAY



ITALIAN CLAY

D1 - PIGMENT CHOICE BOX TEE

OBEY BLUE SKY

263452397

DESCRIPTION: PIGMENT CHOICE BOX TEE

CONTENT: 100% COTTON

WHITE, MULBERRY PURPLE

XS S M L XL



WHITE



MULBERRY PURPLE

D1 - PIGMENT CHOICE BOX TEE

OBEY LOVE HURTS

263452393

DESCRIPTION: PIGMENT CHOICE BOX TEE

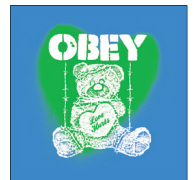
CONTENT: 100% COTTON

DIGITAL BLACK, AZURE BLUE

XS S M L XL



DIGITAL BLACK



AZURE BLUE

D1 - PIGMENT CHOICE BOX TEE

OBEY LOVE DOG

263452394

DESCRIPTION: PIGMENT CHOICE BOX TEE

CONTENT: 100% COTTON

CLAY, MULBERRY PURPLE

XS S M L XL



CLAY



MULBERRY PURPLE

D1 - PIGMENT CHOICE BOX TEE

OBEY PIECE OF HEAVEN

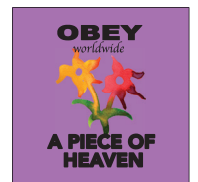
263452399

DESCRIPTION: PIGMENT CHOICE BOX TEE

CONTENT: 100% COTTON

WHITE, MULBERRY PURPLE

XS S M L XL



MULBERRY PURPLE

WHITE

D1 - PIGMENT CHOICE BOX TEE

OBEY MARIPOSA

263452395

DESCRIPTION: PIGMENT CHOICE BOX TEE

CONTENT: 100% COTTON

AZURE BLUE, WHITE

XS S M L XL



AZURE BLUE



WHITE

D1 - PIGMENT CHOICE BOX TEE

OBEY SKETCHY FLOWER

263452396

DESCRIPTION: PIGMENT CHOICE BOX TEE

CONTENT: 100% COTTON

ITALIAN CLAY, CLAY

XS S M L XL



ITALIAN CLAY



CLAY

D1 - PIGMENT CHOICE BOX TEE

HOUSE OF OBEY BUTTERFLY

263782407

DESCRIPTION: CROPPED FITTED TEE

CONTENT: 100% COTTON

WHITE, PASTEL TURQUOISE

XS S M L XL



PASTEL TURQUOISE

WHITE

D1 - CROPPED CHLOE FITTED TEE

OBEY BREEZY FLOWER

263782412

DESCRIPTION: CROPPED FITTED TEE

CONTENT: 100% COTTON

DIGITAL BLACK, TANGERINE

XS S M L XL



TANGERINE

DIGITAL BLACK

D1 - CROPPED CHLOE FITTED TEE

OBEY HERE NOW

263782413

DESCRIPTION: CROPPED FITTED TEE

CONTENT: 100% COTTON

SEPIA, WHITE

XS S M L XL



WHITE

SEPIA

D1 - CROPPED CHLOE FITTED TEE

OBEY PEACE & HARMONY

263782414

DESCRIPTION: CROPPED FITTED TEE

CONTENT: 100% COTTON

PASTEL TURQUOISE, ADVENTURE GREEN

XS S M L XL



ADVENTURE GREEN

PASTEL TURQUOISE

D1 - CROPPED CHLOE FITTED TEE

OBEY LOWER CASE 2

212323411

DESCRIPTION: BASIC PULLOVER HOOD

CONTENT: 70% COTTON 30% POLYESTER

LAVENDER, BLACK, SANDSTONE

XS S M L XL



LAVENDER



BLACK



SANDSTONE

D1 - BASIC PULLOVER HOOD

OBEY WORLDWIDE BUTTERFLY 2

212322415

DESCRIPTION: BASIC PULLOVER HOOD

CONTENT: 70% COTTON 30% POLYESTER

SADDLE, BLACK

XS S M L XL



SADDLE



BLACK

D1 - BASIC PULLOVER HOOD

OBEY LOVE HURTS 2

212322416

DESCRIPTION: BASIC PULLOVER HOOD

CONTENT: 70% COTTON 30% POLYESTER

BROWN, LAVENDER

XS S M L XL



BROWN



LAVENDER

D1 - BASIC PULLOVER HOOD

OBEY CHERUBS IT'S ALL LOVE 2

212322421

DESCRIPTION: BASIC PULLOVER HOOD

CONTENT: 70% COTTON 30% POLYESTER

BLACK, BONE

XS S M L XL



BLACK



BONE

D1 - BASIC PULLOVER HOOD

DRIFTING ON A DAYDREAM

212322402

DESCRIPTION: BASIC PULLOVER HOOD

CONTENT: 70% COTTON 30% POLYESTER

BONE, BROWN

XS S M L XL



BONE



BROWN

D1 - BASIC PULLOVER HOOD

OBEY LOVE PUPPY 2

211742417

DESCRIPTION: BASIC CREW FLEECE

CONTENT: 80% COTTON 20% POLYESTER

SANDSTONE, LIGHT PINK

XS S M L XL



SANDSTONE



LIGHT PINK

D1 - BASIC CREW FLEECE

OBEY WATERCOLOR TEDDY BEARS 2

211742418

DESCRIPTION: BASIC CREW FLEECE

CONTENT: 80% COTTON 20% POLYESTER

BLACK, AQUA

XS S M L XL



BLACK



AQUA

D1 - BASIC CREW FLEECE

OBEY HEAVEN ANGEL 2

211752419

DESCRIPTION: BASIC ZIP HOOD

CONTENT: 70% COTTON 30% POLYESTER

BLACK, SANDSTONE

XS S M L XL



SANDSTONE

BLACK

D1 - BASIC ZIP HOOD

OBEY GREEN EYES 2

211752420

DESCRIPTION: BASIC ZIP HOOD

CONTENT: SOLIDS - 70% COTTON 30% POLYESTER - HEATHER GREY: 58% COTTON 42% POLYESTER

HEATHER GREY, SANDSTONE

XS S M L XL



SANDSTONE

HEATHER GREY

D1 - BASIC ZIP HOOD

SALES REPRESENTATIVES

Pacific Northwest: Burl Darden
64171 Tumalo Rim Drive Bend, OR 97701
P: 541.385.3302 | F: 541.385.3302
E: burl@obeyclothing.com

Levi Campbell
2039 SE 29th Ave. Portland, OR 97214
P: 360.510.6811 | E: levi@obeyclothing.com

California | Nevada | Arizona | New Mexico: Mark Mazza
20091 Shorewood Circle Huntington Beach, CA 92649
P: 714.614.7901 | F: 714.964.3676
E: mdmsales@me.com

Dom Berroya
E: dom.mdmsales@icloud.com

Hawaii | Guam: Noel Marchan
95-1038 Ainamakua Dr. #H Mililani, HI 96789
P: 808.676.5290 | E: nmarchan@aol.com

Midwest: Laura Karels
13816 Shirley Dr. Burnsville, MN 55337
P: 952.461.4218 | F: 952.461.4219
E: laura_karels@yahoo.com

Northeast: Joe Comba
26 Avon rd. New rochelle, ny 10804
C: 914.393.9897 | E: joe@obeyclothing.com

Mid Atlantic | Southeast
Andrew Mercier
10777 Bishopville Rd. Bishopville, MD 21813
C: 443.614.4422 | E: mercier@obeyclothing.com

International: Nick Lhotsky
17462 Von Karman Ave. Irvine, CA 92614 U.S.A.
P: 949.596.8400 X263 | C: 443.373.3283 | F: 949.596.8437
E: nick@obeyclothing.com

17462 Von Karman Avenue Irvine, CA 92614

obeyclothing.com | obeygiant.com
949.596.8400